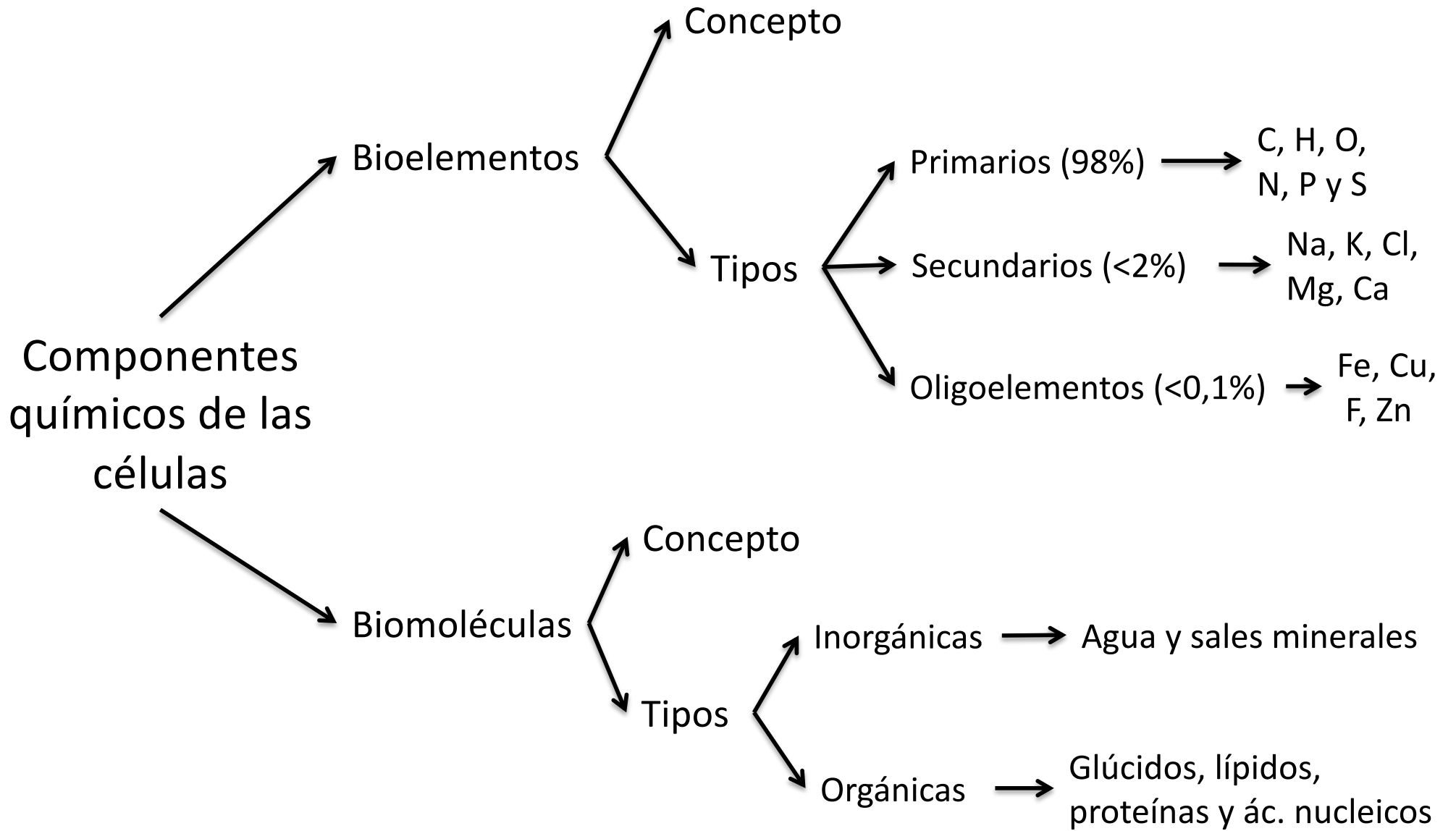
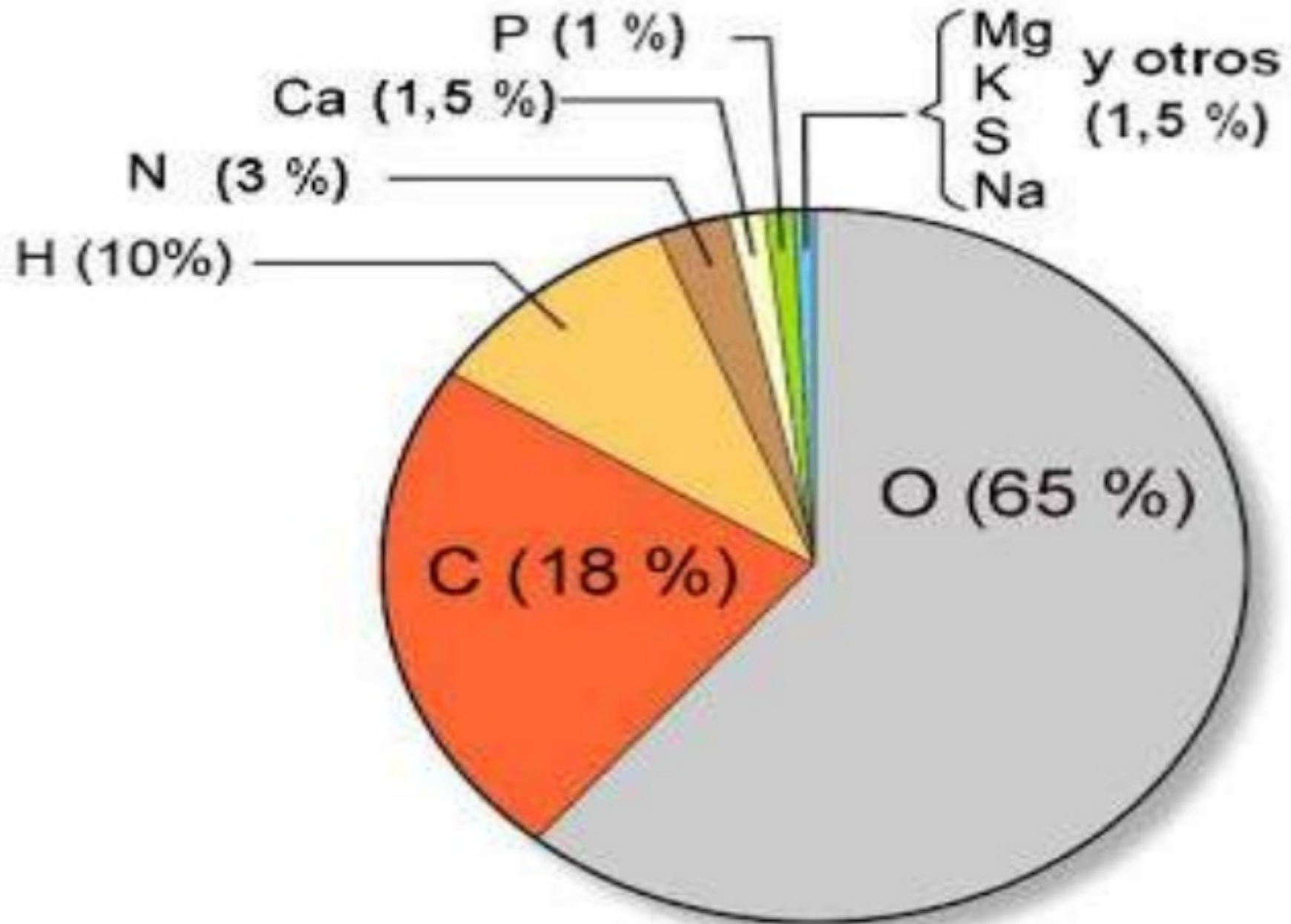


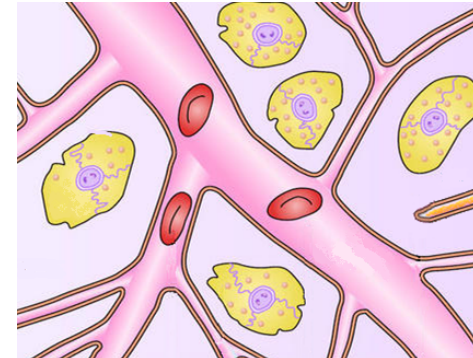
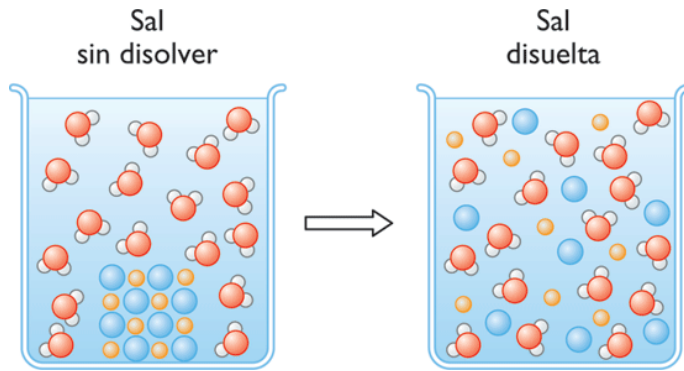
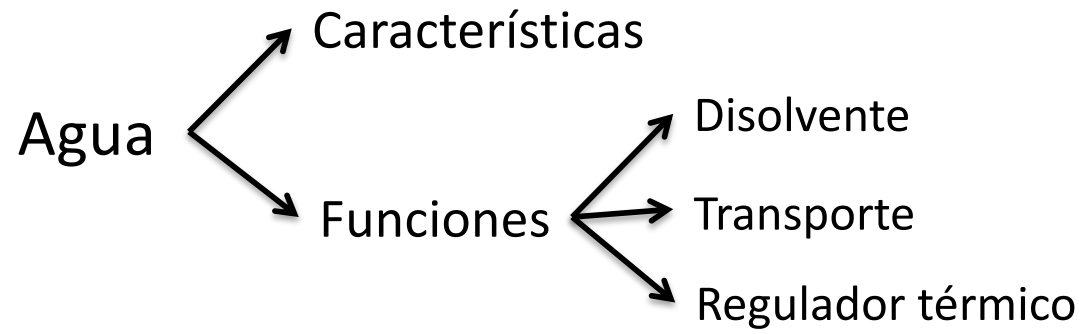
TEMA 1: LA CÉLULA Y SUS COMPONENTES

- ❖ Componentes químicos de las células:
 - Bioelementos.
 - Biomoléculas.
- ❖ Organización celular.
 - Célula procariota y eucariota
 - Célula animal y vegetal
 - Orgánulos de las células eucariotas



BIOELEMENTOS

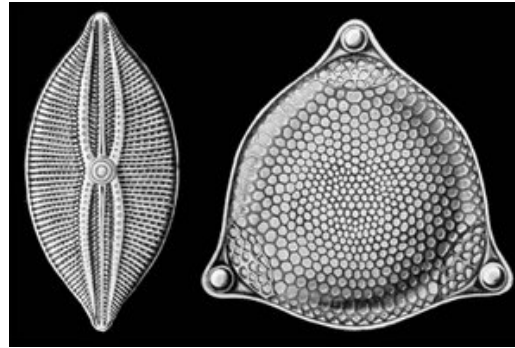




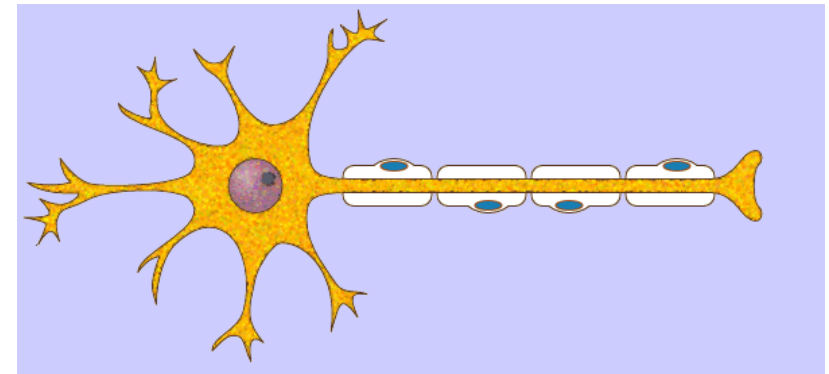
Sales minerales

Tipos

Precipitadas

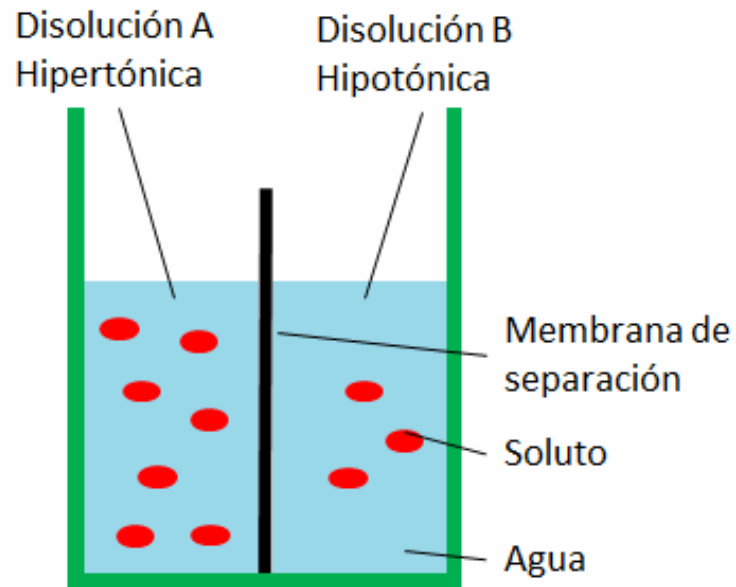


Disueltas

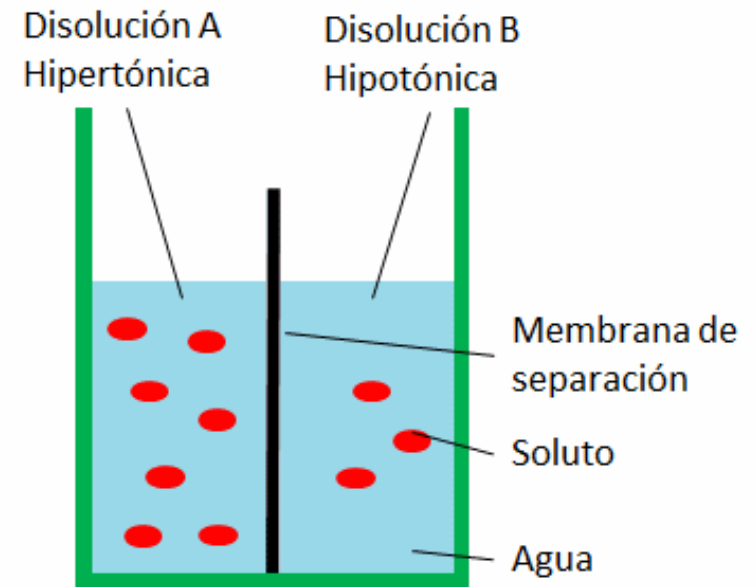


DISOLUCIÓN

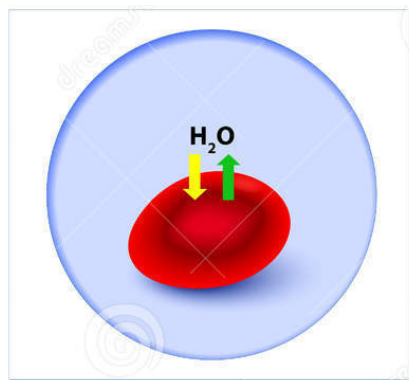
DIFUSIÓN



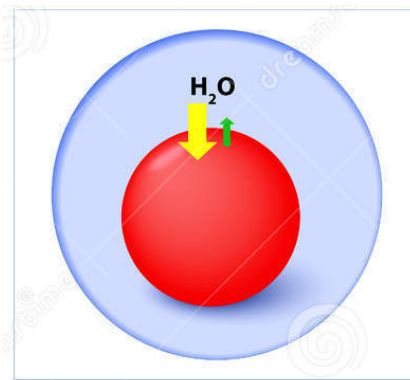
ÓSMOSIS



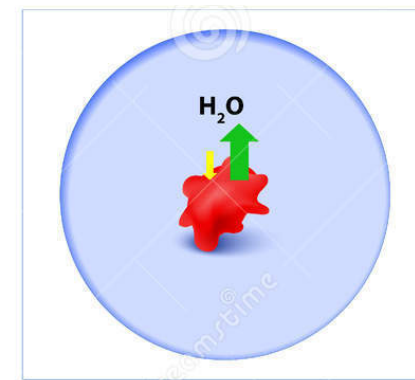
Efecto de la ósmosis sobre las células



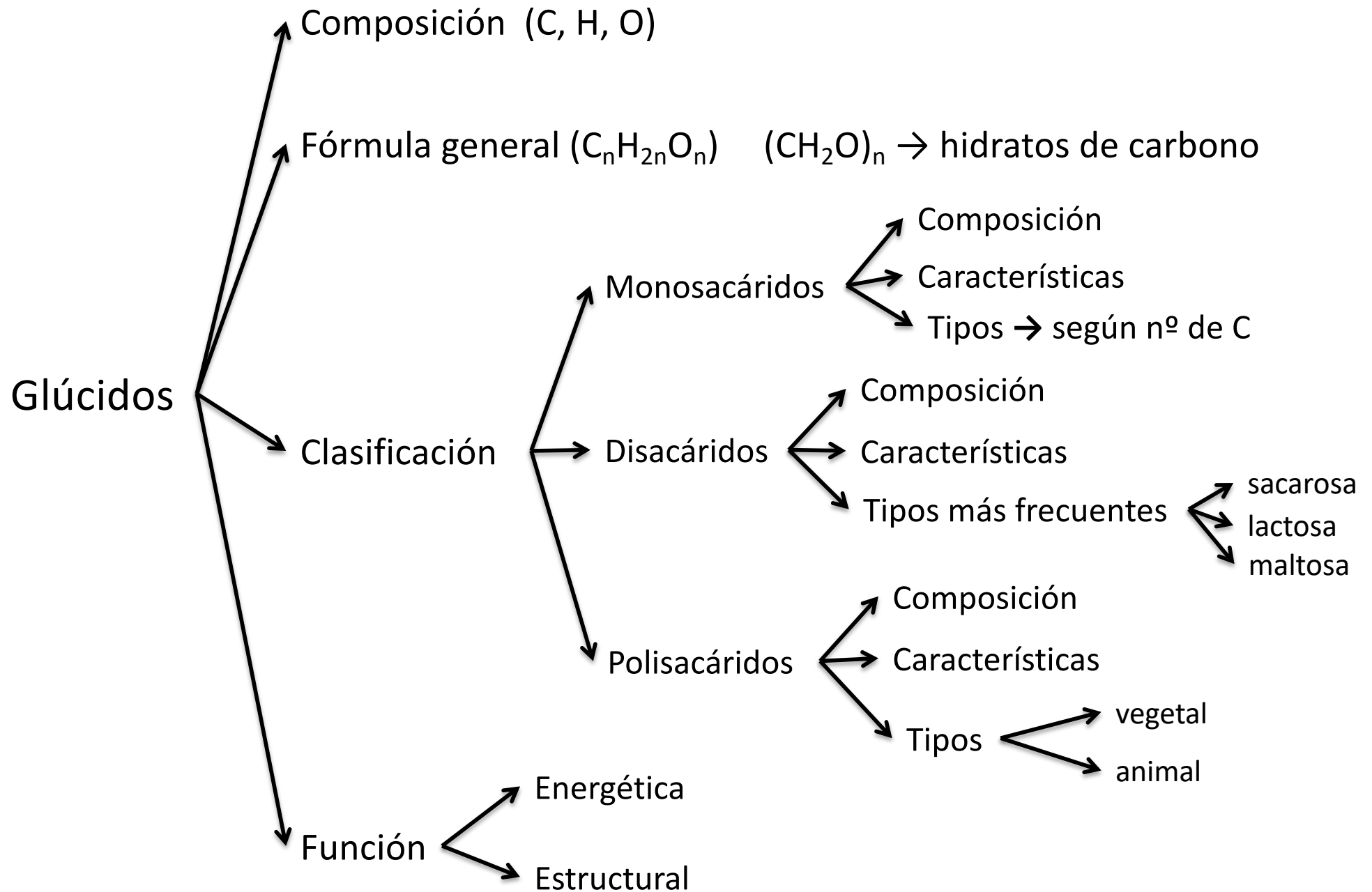
Disolución isotónica

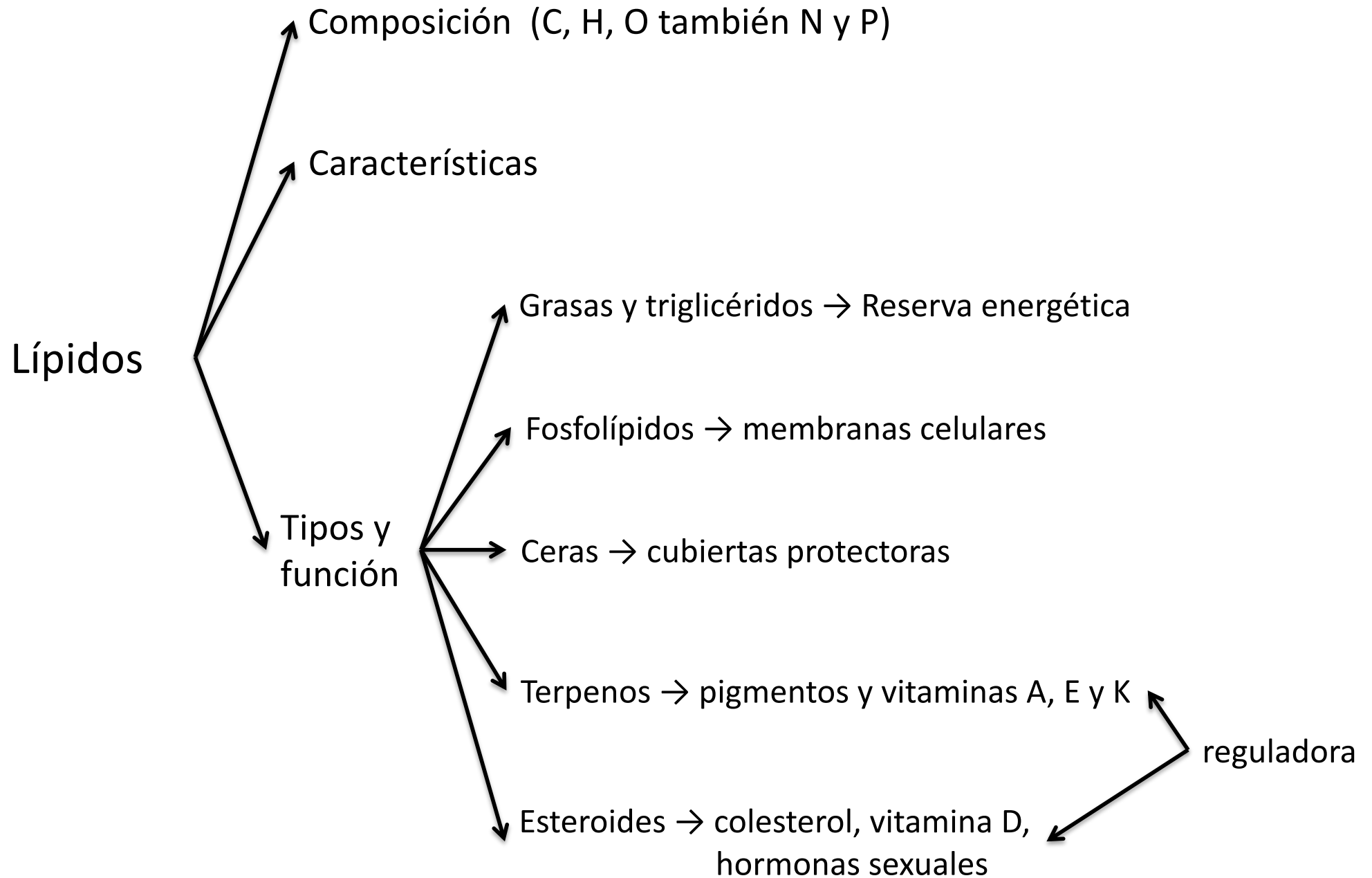


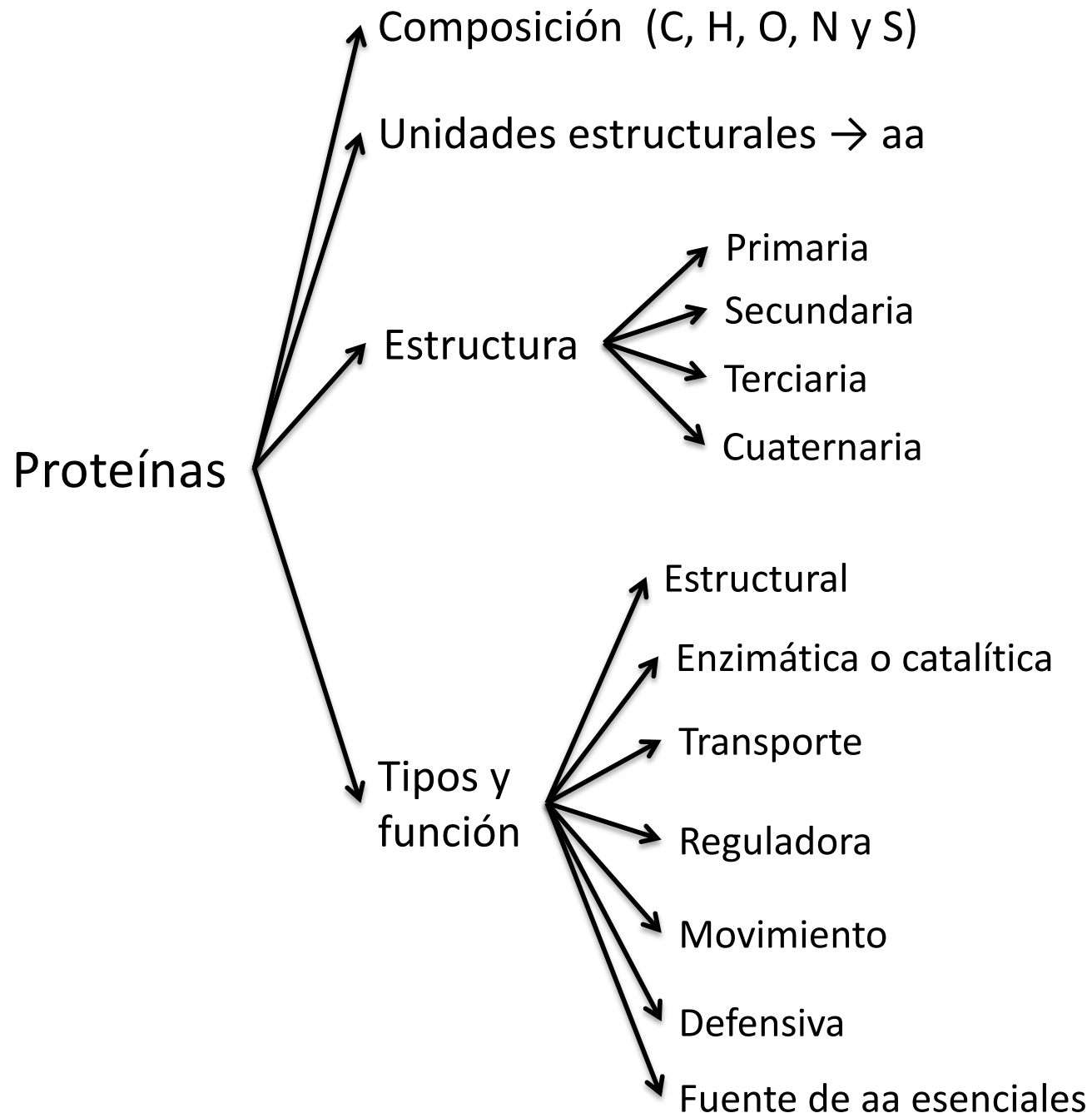
Disolución hipotónica



Disolución hipertónica







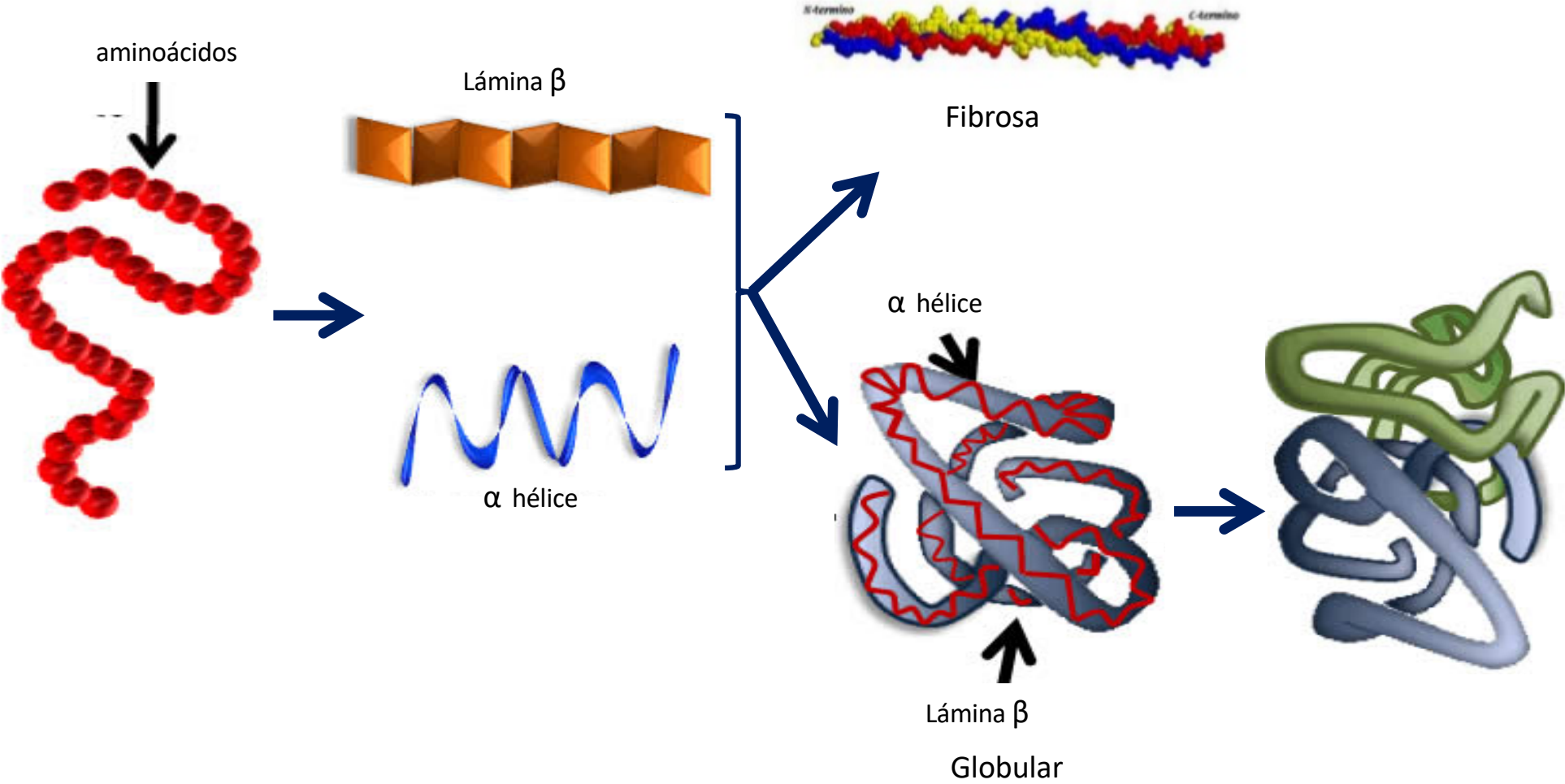
ESTRUCTURA DE LAS PROTEÍNAS

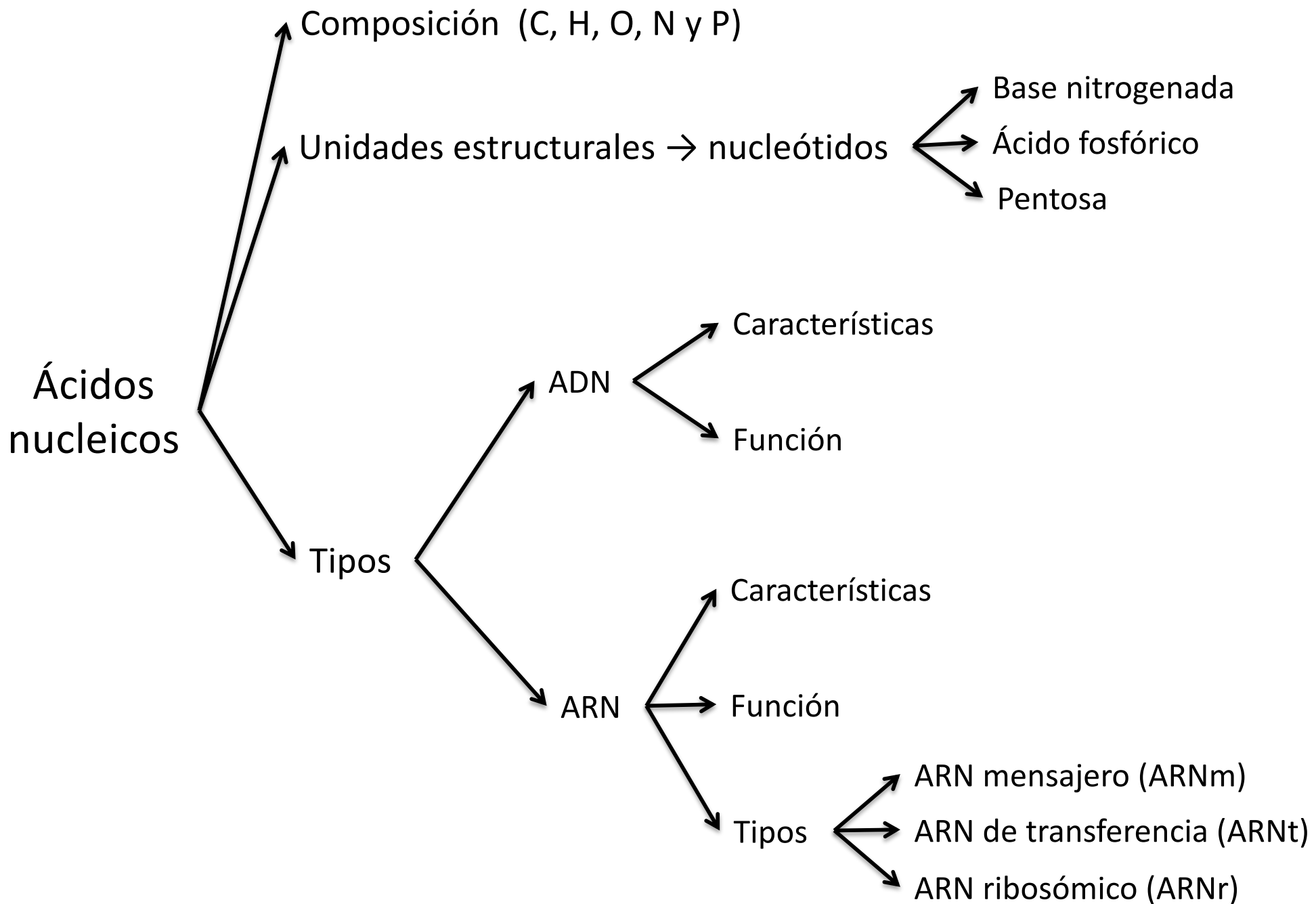
PRIMARIA

SECUNDARIA

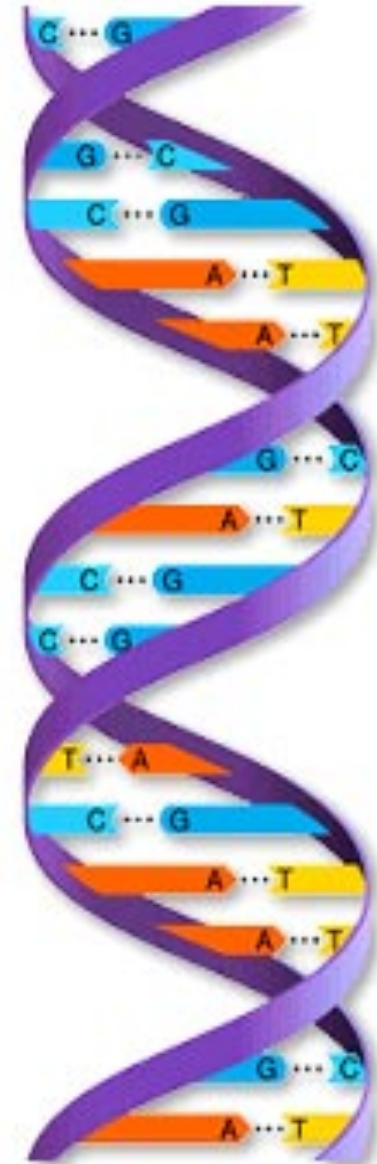
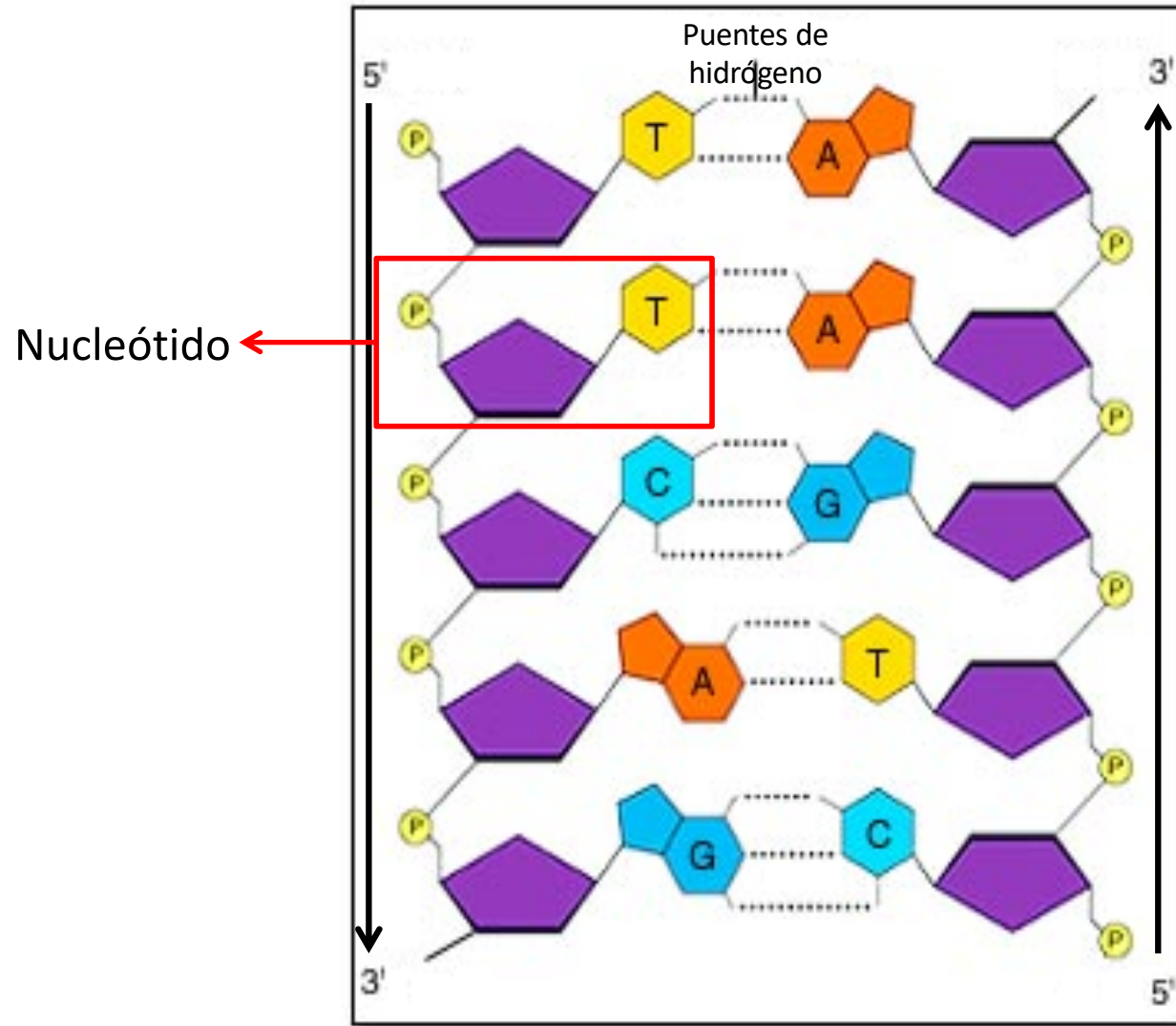
TERCIARIA

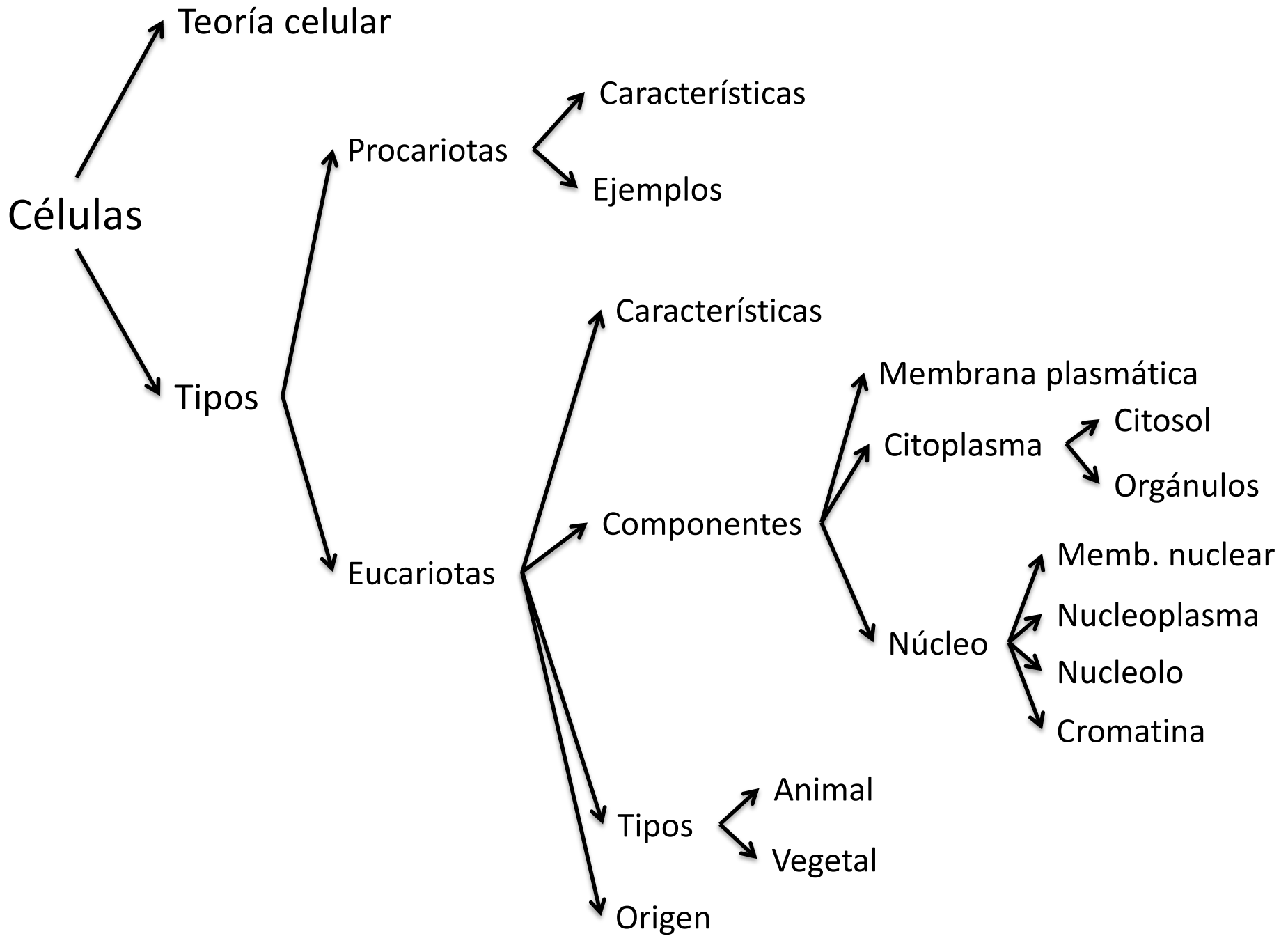
CUATERNARIA



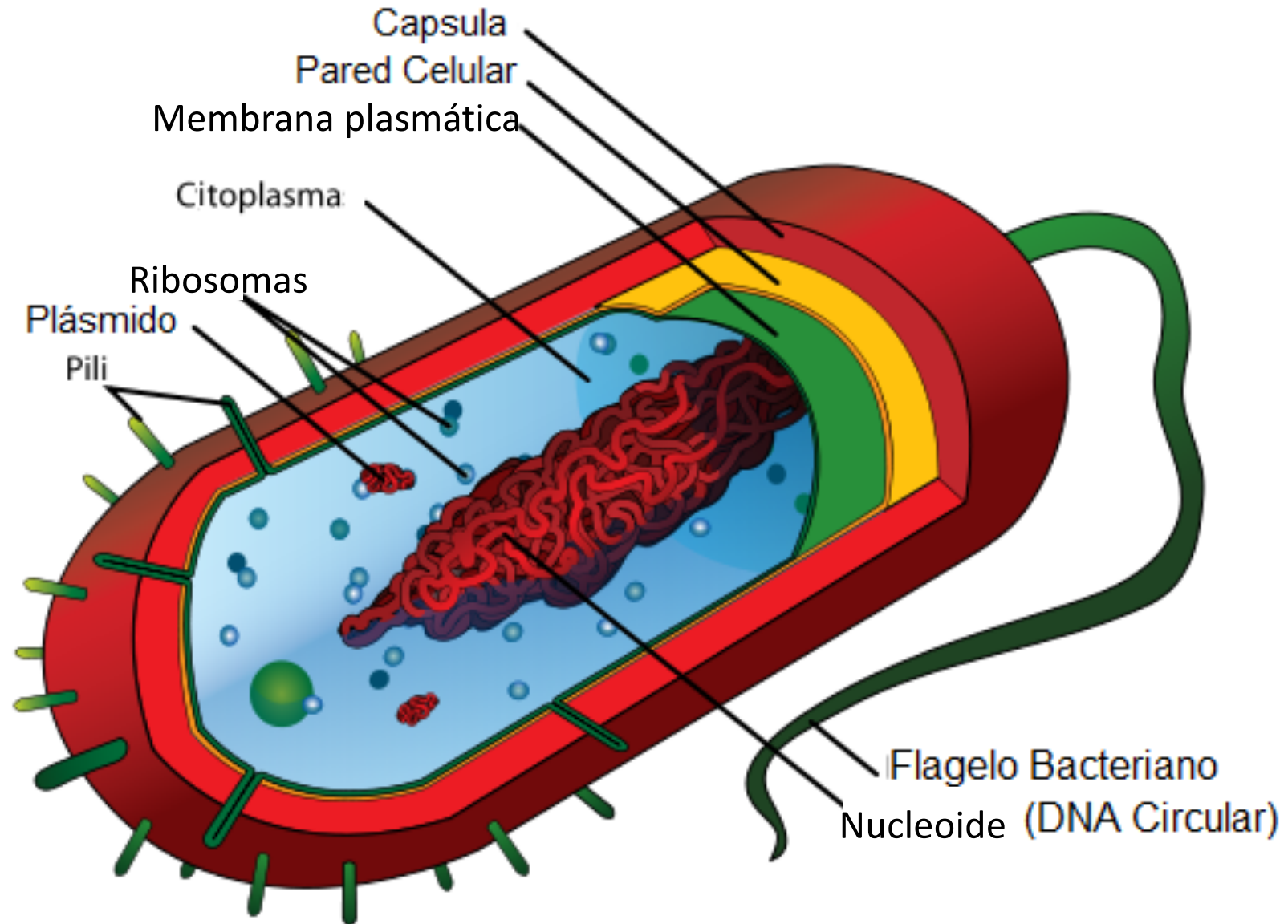


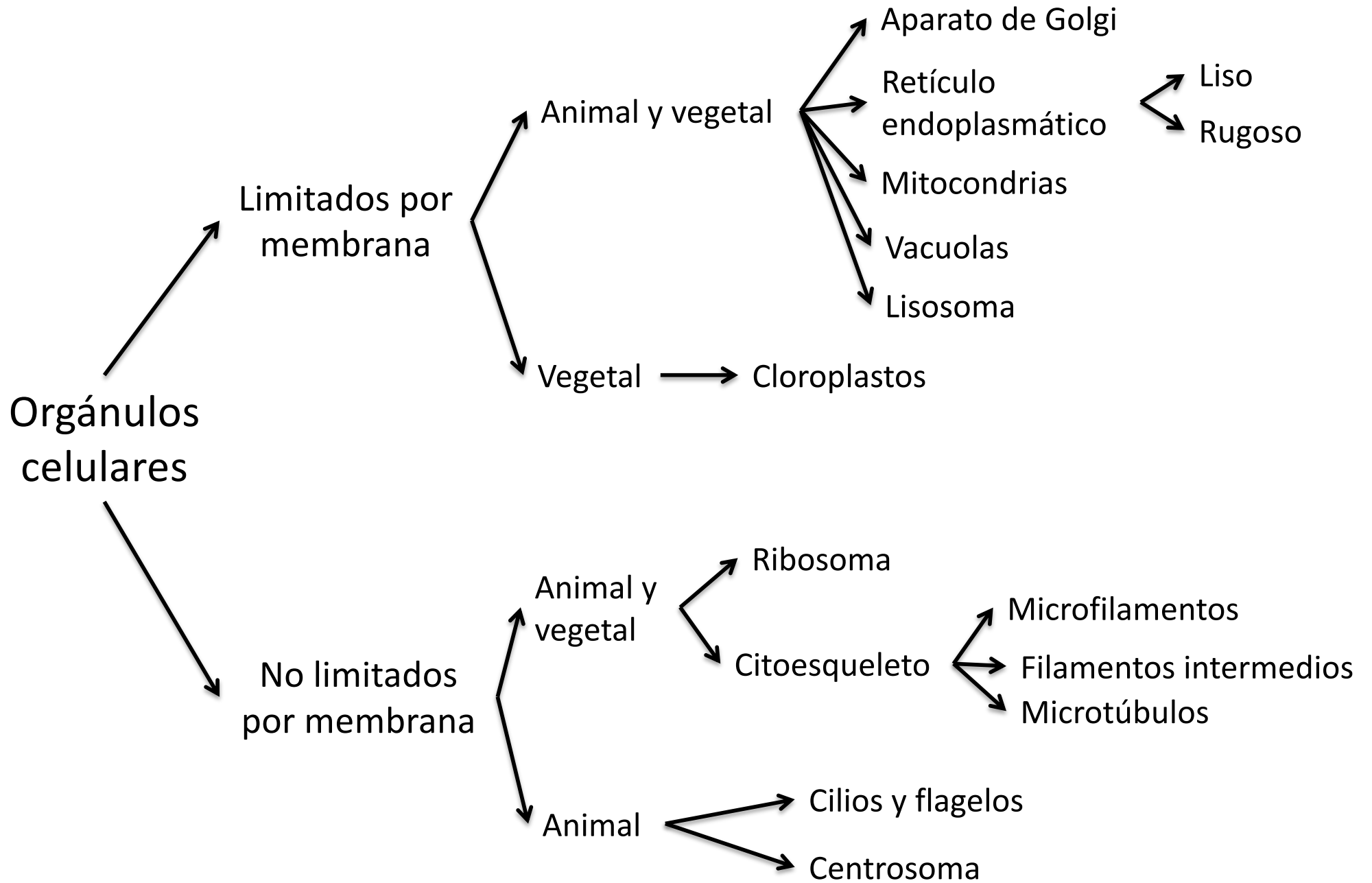
Estructura del ADN



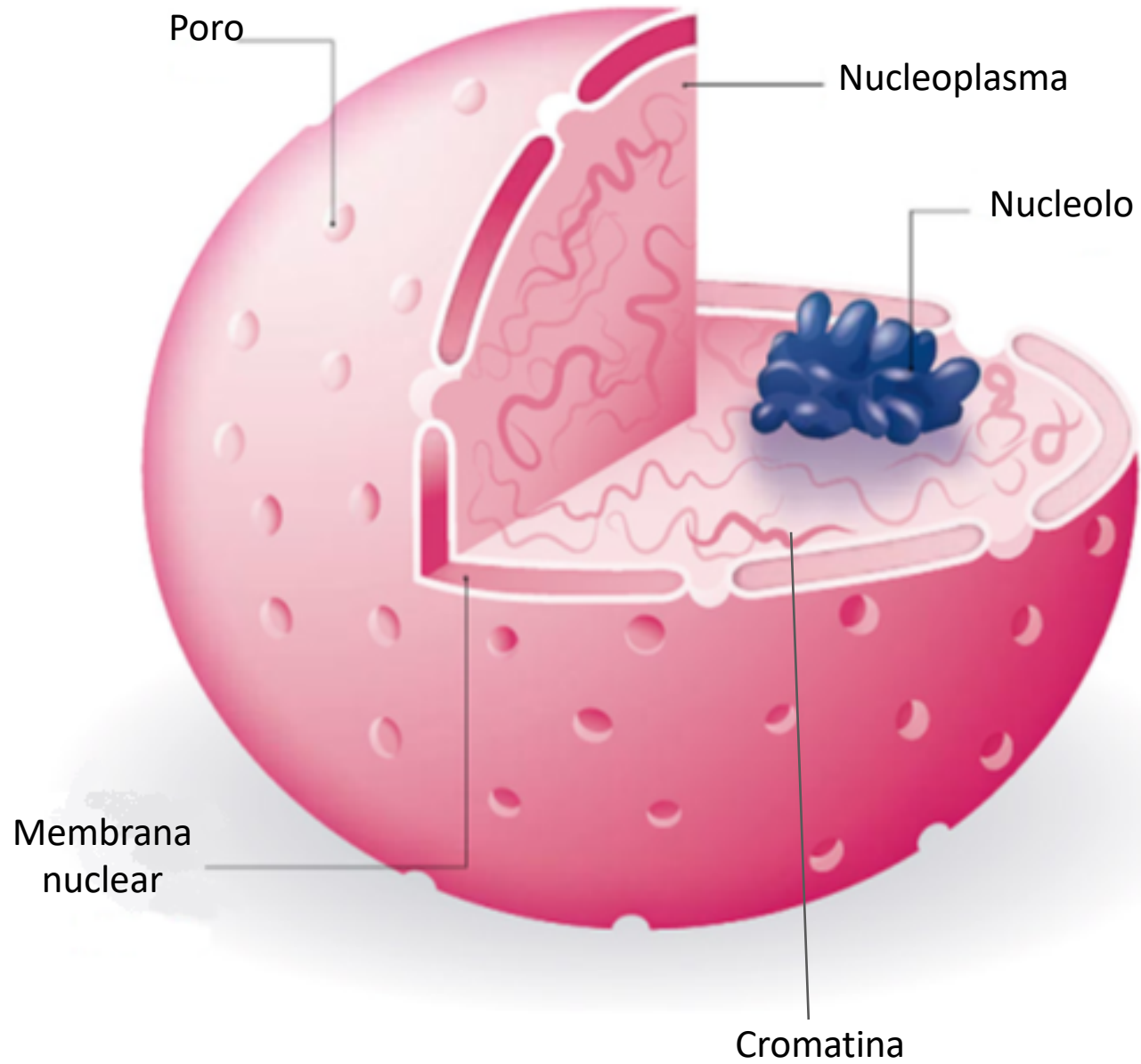


CÉLULA PROCARIOTA





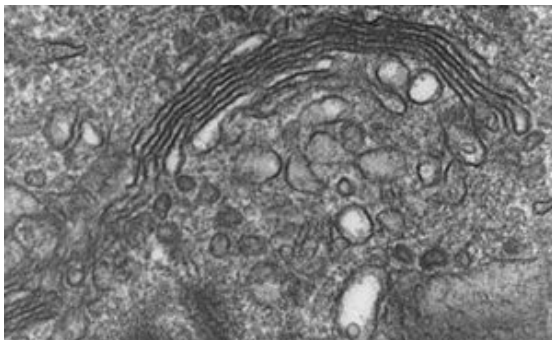
NÚCLEO CELULAR



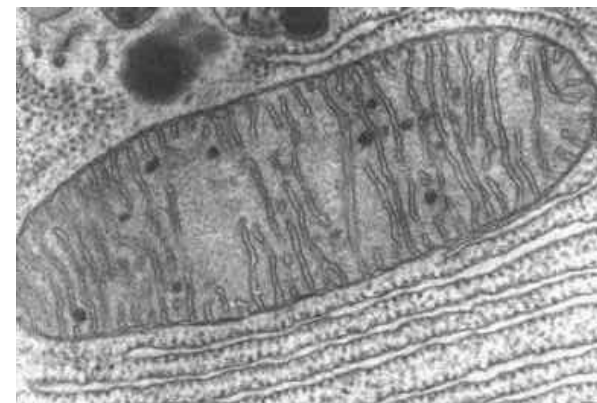
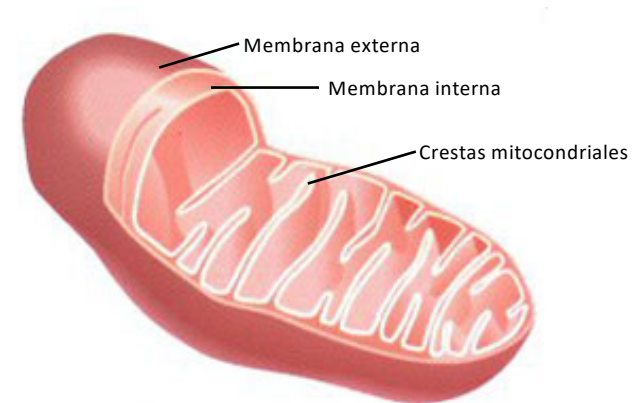
ORGÁNULOS CELULARES LIMITADOS POR MEMBRANA

ANIMALES Y VEGETALES

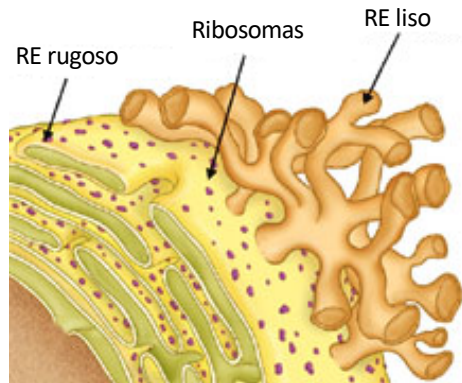
APARATO DE GOLGI



MITOCONDRIA



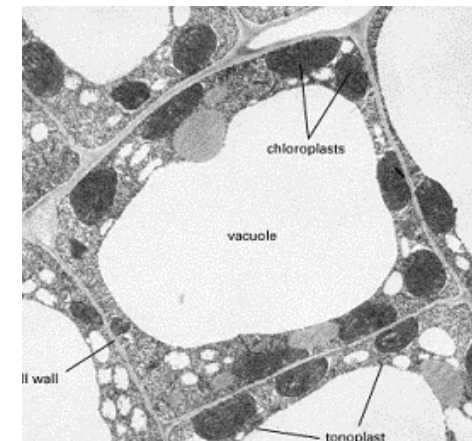
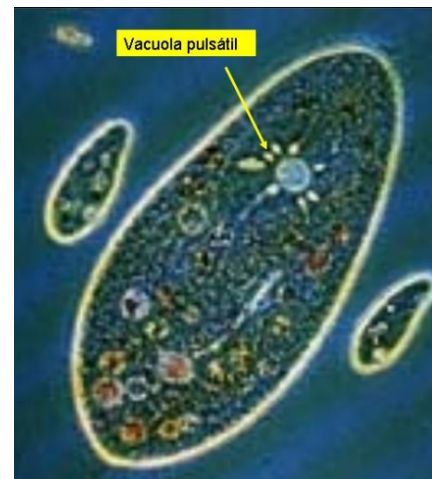
RETÍCULO ENDOPLASMÁTICO



LISOSOMA

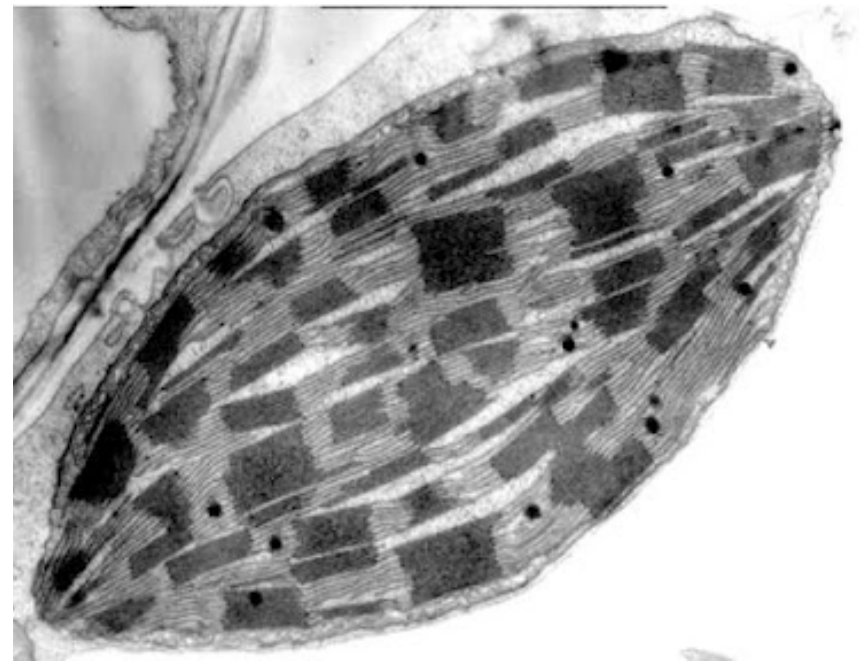
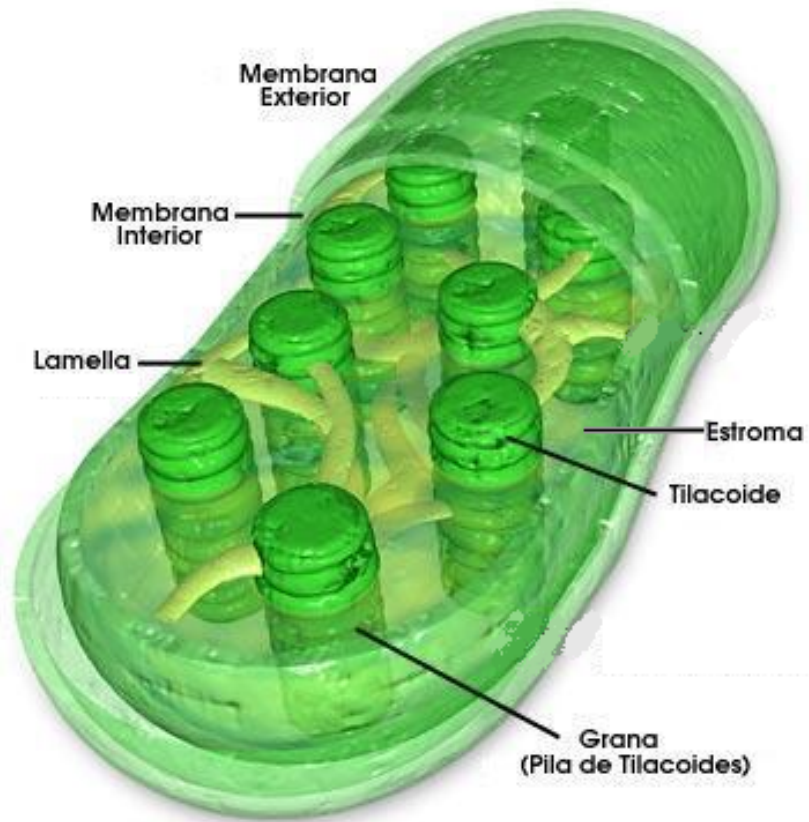


VACUOLA



VEGETAL

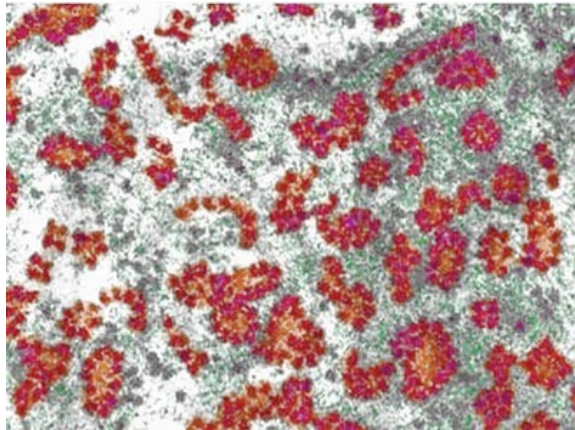
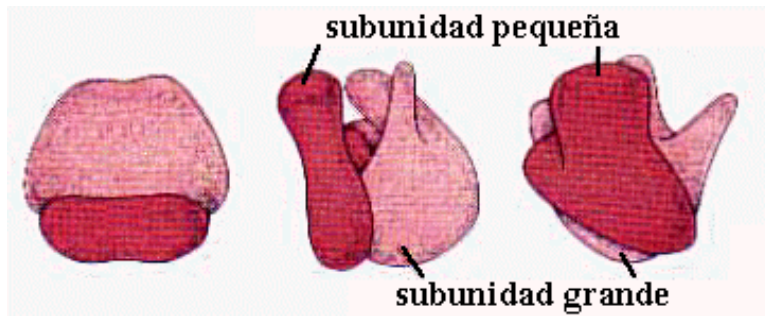
CLOROPLASTO



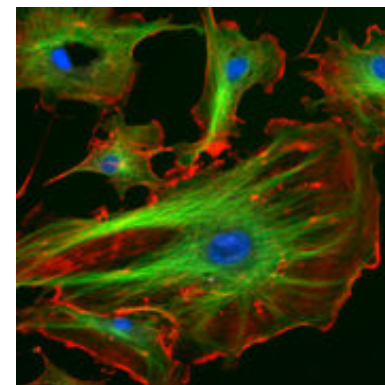
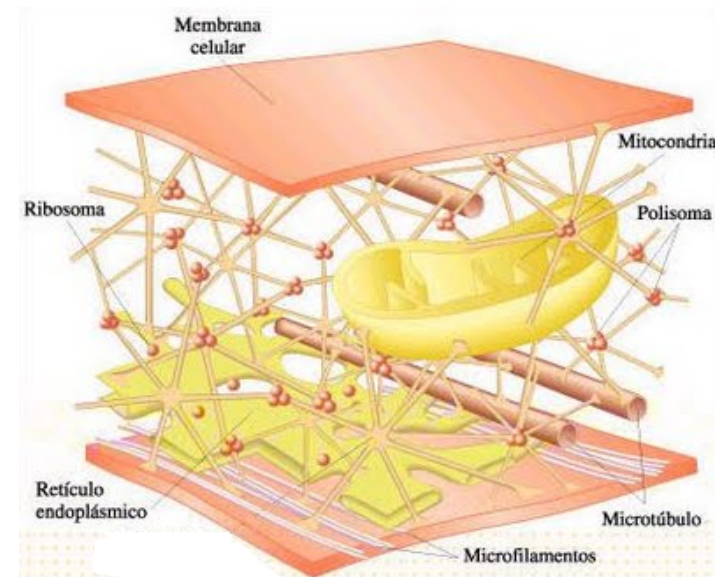
ORGÁNULOS CELULARES NO LIMITADOS POR MEMBRANA

ANIMALES Y VEGETALES

RIBOSOMA

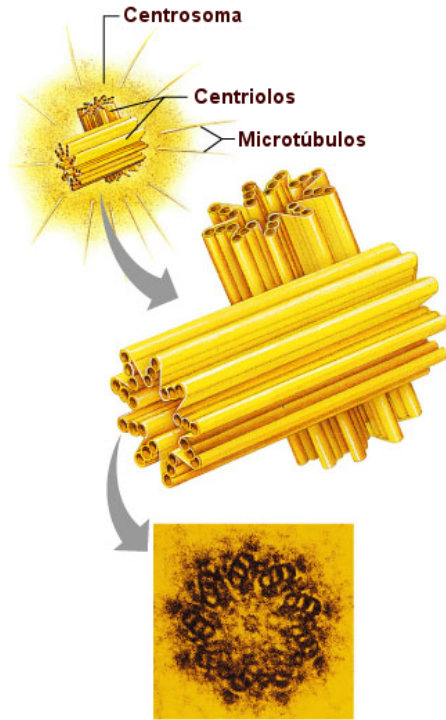


CITOESQUELETO

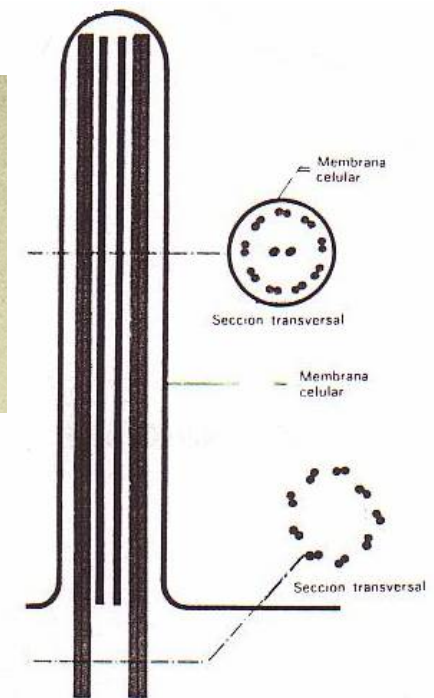
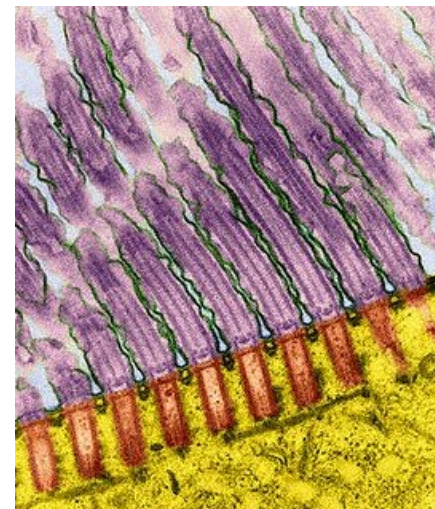
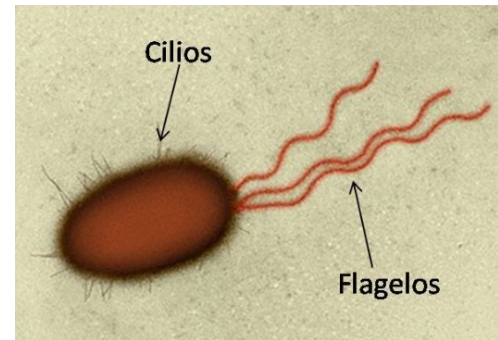


ANIMAL

CENTROSOMA



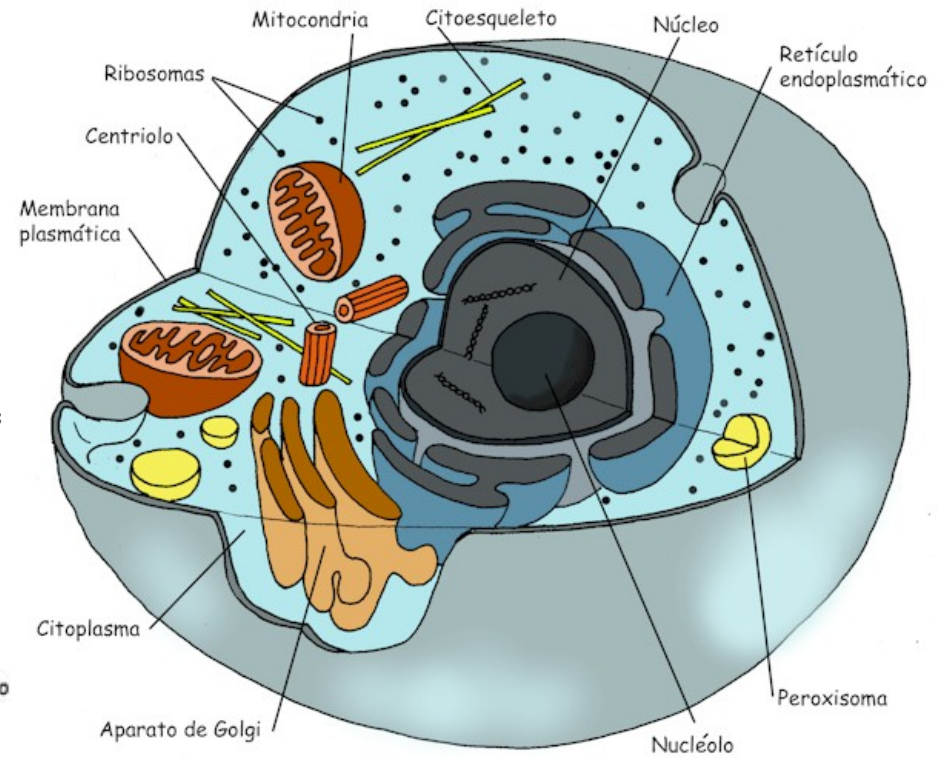
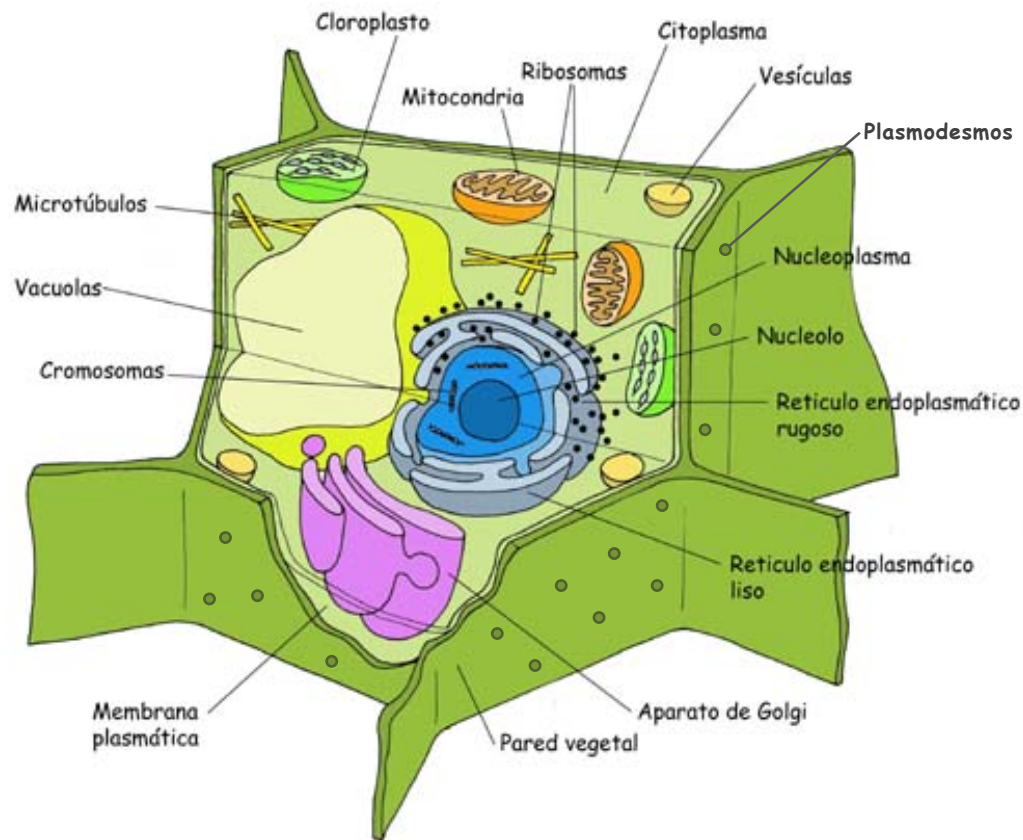
CILIOS Y FLAGELOS



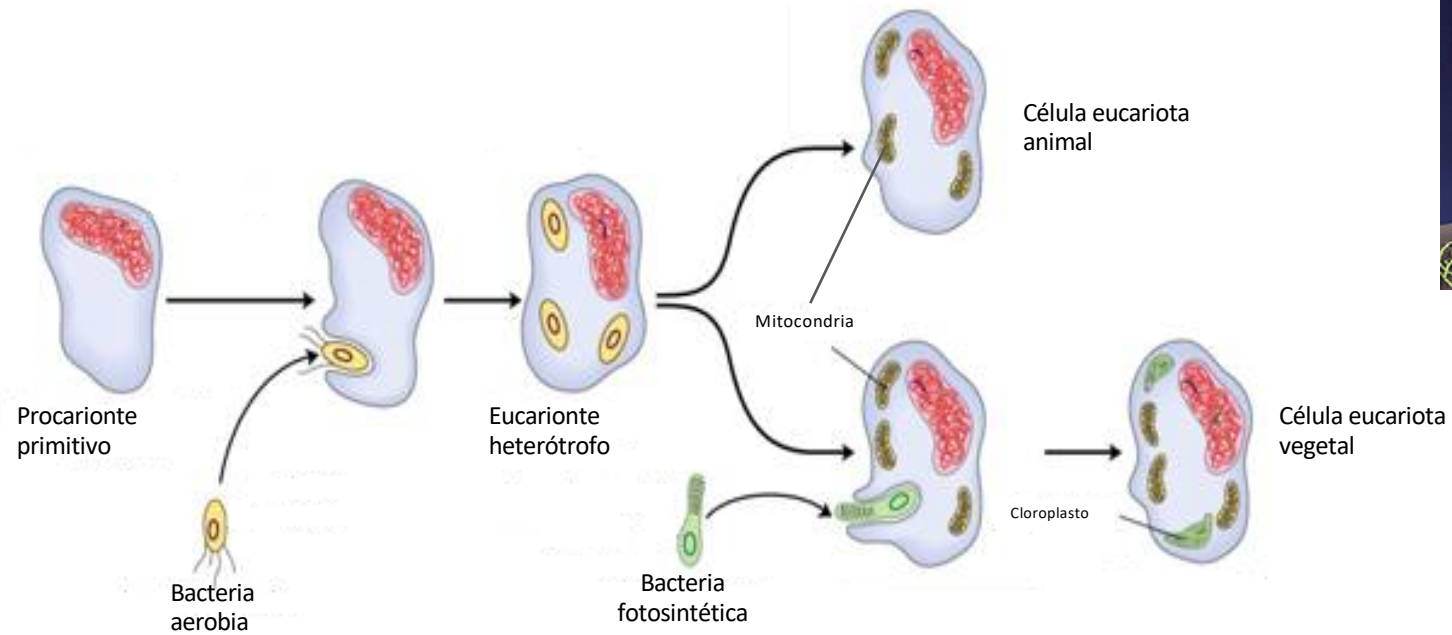
CÉLULA EUCARIOTA

ANIMAL

VEGETAL



TEORÍA ENDOSIMBIÓTICA Lynn Margulis (1938-2011)



Porle cara a...

Lynn Margulis